

# repurposedMATERIALS

“re-using by repurposing byproducts and waste of industry”

**DAMON CARSON**

Owner & Founder of repurposedMATERIALS

**AS FEATURED IN:**

























~~CHIP SHRED GRIND MELT~~



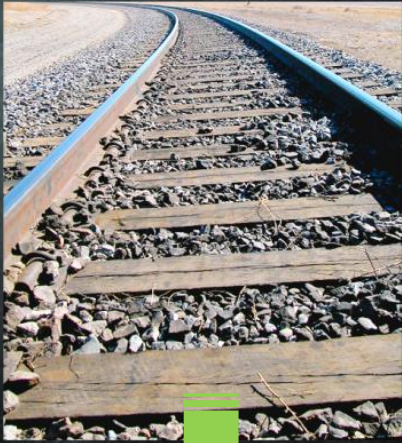


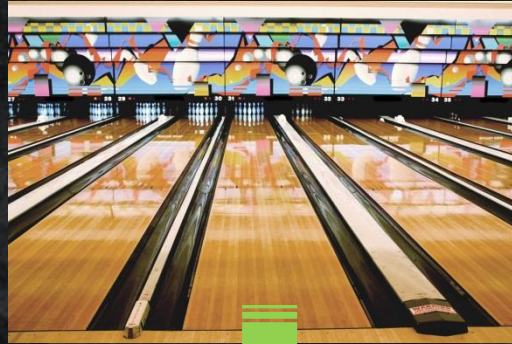




repurposed **MATERIALS**









# S.A.V.E. it

**S** tandardized



**A** vailability



**V** ersatility



# Versatility



# S.A.V.E. it

**S** tandardized



**A** vailability



**V** ersatility



**E** ngineering







Engineering



# substitutionary THINKING®

## Wire Rope News & Sling Technology

Advertisers Index  
Page 153

www.wire-rope-news.com

### SLINGUARD™ PROTECTORS

"CLUTCH ACTION"

PATENT NO. 4039217, 4039218, 4124244

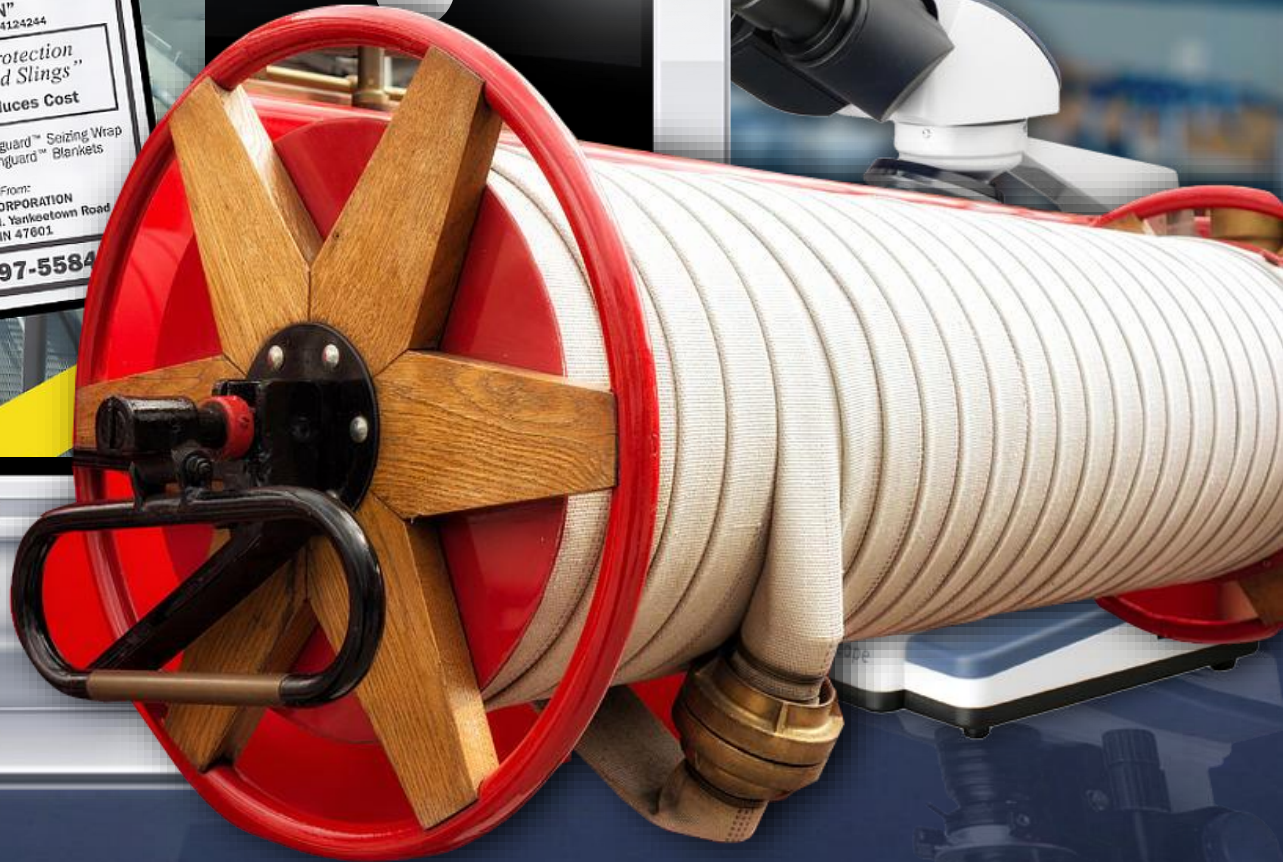
*"The Only Proven Protection  
For Your Products and Slings"*

Extends Sling Life - Reduces Cost

Slinguard™ Sleeves • Slinguard™ Seizing Wrap  
Slinguard™ Pads • Slinguard™ Blankets

Available From:  
THE VERNON CORPORATION  
P.O. BOX 246 • 400 N. Yanketown Road  
Boonville, IN 47601

1-800-897-5584



# substitutionary THINKING®

www.WATTAgNet.com

## WATT Poultry USA

The magazine for the integrated poultry industry

Share Williams of Fieldale Farms and...

**SOUTHWEST AGRI-PLASTICS, INC.**

### DURA-SLAT

PLASTIC BREEDER SLAT

**DURA-SLAT**  
**DURA-PAD**  
**DURA-RAMP**

**PLASTIC VS. WOOD**

<b>PLASTIC</b>	<b>WOOD</b>
<b>NOT UNSAFE / MENTURE RESISTANT</b>	<b>HEAVY PACE OF DEW / ABSORPTION</b>
<b>LOWERS SOIL CONTAMINATION</b>	<b>PREVENTS SOIL CONTACT / TRAPS BACTERIA</b>
<b>SOFT, PEDESTAL SURFACE</b>	<b>DIFFICULT TO CLEAN</b>
<b>EASY TO CLEAN</b>	<b>SHORTER LIFE</b>
<b>LONGER LIFE</b>	

**PLUS**  
Chicken e...  
Preview o...  
Poultry pr...  
for Salmon...

1.800.288.9748 SWAPINC.COM

SWAPINC.COM

1.800.288.9748 SWAPINC.COM











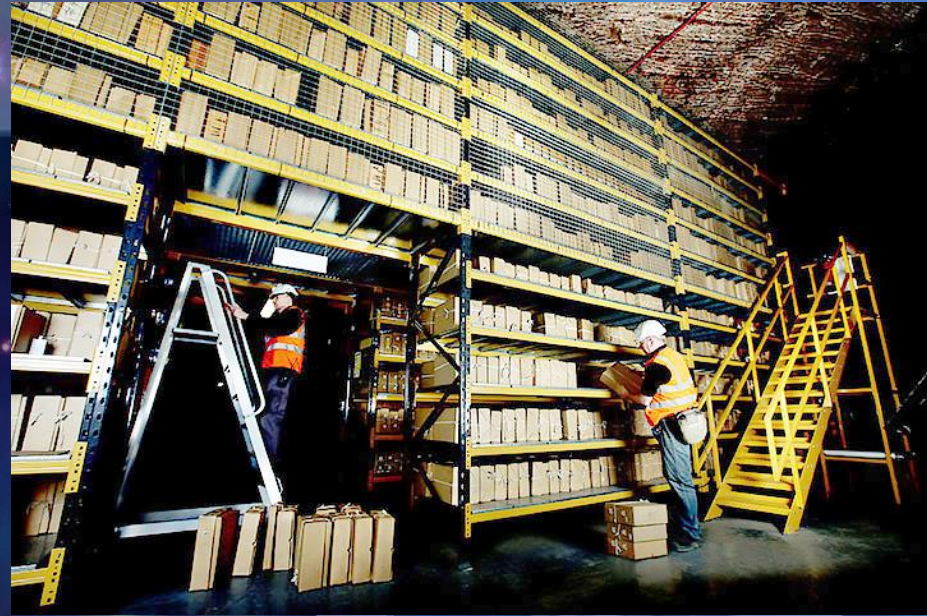
Escalator to  
Restrooms ↑





THE  
OUTREACH  
LIMITS

The image is a composite graphic. The background is a vibrant space nebula with colors ranging from deep red and orange to bright yellow and blue. In the center, there is a dark rectangular area containing a silhouette of a person looking out into space. To the right of this central area, a detailed image of a microscope is visible. The text 'THE OUTREACH LIMITS' is rendered in a large, bold, blue, 3D-style font with a metallic sheen. The word 'THE' is positioned at the top, 'OUTREACH' is in the middle, and 'LIMITS' is at the bottom. The letters are spaced out across the width of the image.





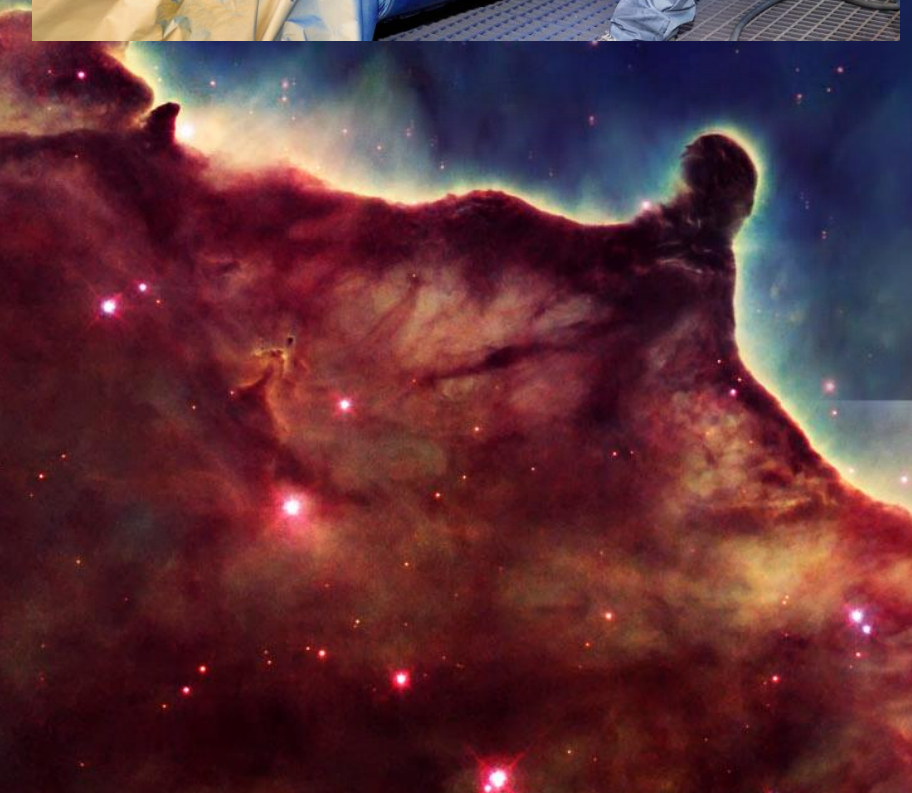




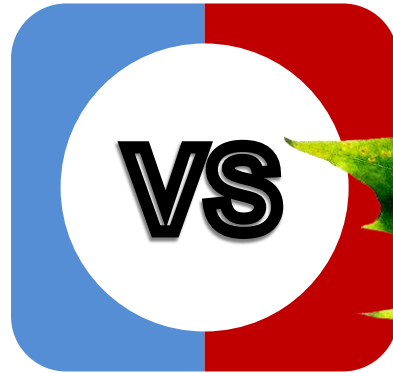














**AFFORDABILITY** AVE

**SUSTAINABILITY** ST



# repurposedMATERIALS

“re-using by repurposing byproducts and waste of industry”

**DAMON CARSON**

Owner & Founder of repurposedMATERIALS

## **AS FEATURED IN:**

